

Refill Order Information

SPACE MAINTAINER BANDS & CROWNS

Bands and Crowns are sold separately by size

Easily search for and add multiple products with different quantities to your shopping cart at denovodental.com



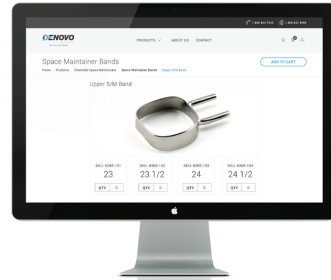
S/M Bands

SIZES	U23 – U42
SIZES	L23 – L42



S/M Crowns

SIZES	UL1 – UL7
SIZES	UR1 – UR7
SIZES	LL1 – LL7
SIZES	LR1 – LR7



SPACE MAINTAINER WIRES

Wires are sold separately in boxes of 10, specified by size: Narrow or Wide



Plain Wires

NARROW	383-001
WIDE	383-003



Occlusal Rests

NARROW	384-001
WIDE	384-003



Drop Wires

NARROW	380-001
WIDE	380-003



Distal Shoes

NARROW	381-001
WIDE	381-003

Denovo Band Instruments



Wire Shear

Cuts wire precisely with no burrs or distortions

PART #	802-020
--------	---------

LONG BEAK



STANDARD

Posterior Band Remover

Easily removes bands from posterior teeth after use

LONG BEAK	800-204
STANDARD	800-202



Band Seater

Autoclavable Band Seater w/ serrated stainless steel tip

PART #	811-002
--------	---------



Tube Crimping Plier

Perfectly crimps tubes onto wires

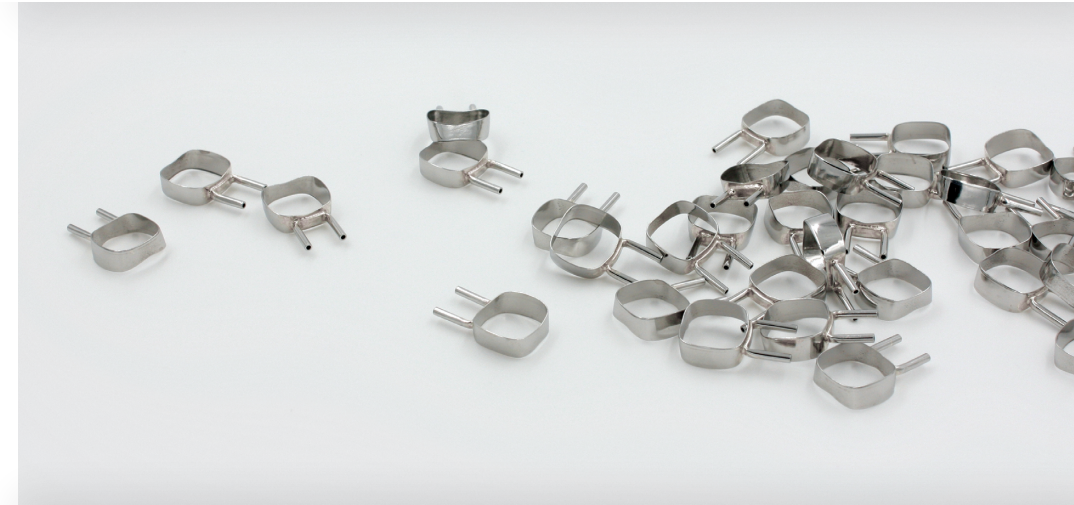
PART #	800-419
--------	---------

See our full offering of Band Instruments at www.denovodental.com

DENOVO®



denovodental.com



Chairside Space Maintainer System Application Procedures

FREE Shipping on Online Orders over \$250!*

*see website for details



denovodental.com



1.800.854.7949



1.800.847.8599



info@denovodental.com



CE Certified
2195



Denovo Dental Inc.
5130 Commerce Dr.
Baldwin Park, CA, USA



KinderDent, Gutenbergstrasse 7
D – 28844 Weyhe, Germany



Denovo Space Maintainers are made from surgical grade stainless steel, which contains nickel (9.58%). Nickel has been shown to cause allergic reactions in some patients.



Do not reuse. Appliances are designed and priced to be disposable. If appliance is used for a trial fit only, sterilize for future use.



Aspiration/Ingestion possibility. Use rubber dam on installation and educate patient to avoid hard or chewy substances which could dislodge appliance.

Denovo products are sold clean but not sterile; sterilization prior to use is recommended for patients with compromised immune systems.

REV.17.11.01



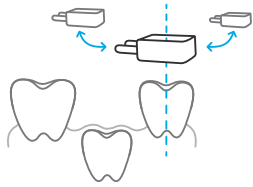
Responsibly Printed
& Packaged

Made and assembled in the USA
DENOVO Dental Inc. Baldwin Park, CA 91706



Band & Crown Application

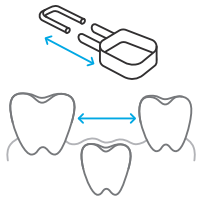
①



TRIAL FIT: Select an approximate band or crown and trial fit to tooth. A properly seated band will be difficult to dislodge or push gingivally. Do not apply pressure to the space maintainer tube section.

If trial fit is incorrect, *sterilize the band for future use**.

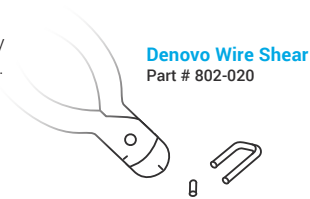
②



INSERT WIRE & ADJUST LENGTH: Insert space maintainer wire into tube and trial fit assembly in mouth.
NOTE: There are two width sizes for wires; narrow and wide. Wide wires go on the larger band sizes and crowns. Check that wire width matches the tube width. Slide wire to desired length.

If the wire is too long, trim the wire with Denovo Wire Shears or a diamond disk. In applications involving very small spaces, the tube may need to be trimmed as well. Use a diamond disk to cut tubes.

With the Denovo Tube Crimping Plier, lightly crimp tube over wire to hold the position.



Denovo Wire Shear
Part # 802-020

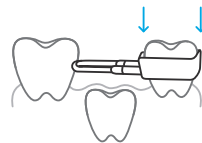
③

Denovo Tube Crimping Plier
Part # 800-419



CRIMP: Remove the appliance from mouth. Crimp both tubes firmly, making sure the crimps are over the inserted wire. Check appliance for stability. Wire should not move. More than one crimp may be made on each tube.

SEAT: re-seat appliance on the tooth. The entire appliance should be free of occlusal contact with the opposing arch. Cement band or crown with your preferred glass ionomer.



*Used parts that are to be re-used need to be cleaned, disinfected, and sterilized prior to next use. Automatic procedures for washer/disinfecting unit and the sterilizing unit should be used when possible.

To see an in-depth Chairsides Space Maintainer application demonstration video, visit:
www.denodontal.com/resources

Wire Types & Application

Plain Wires

Highly customizable, with the ability to adapt to most clinical situations



Drop Wires

Used to seat against an erupted permanent tooth after the loss of a primary second molar (*application details below*)



Occlusal Rest Wires

Provides more stability, support and strength to the appliance by bending the occlusal wire over the occlusal ridge (*application details below*)

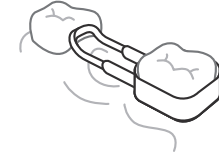


Distal Shoe Wires

Used to seat subgingivally when a patient's 2nd Primary Molar has been lost prematurely, and the 1st Permanent Molar hasn't erupted yet. (*application details below*)

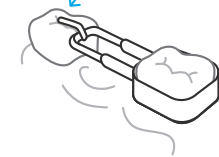


Drop Wire



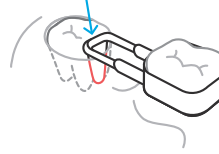
USING THE DROP WIRE: A drop wire can be used when the patients permanent tooth has erupted, and they've already lost their primary second molar. A straight wire could potentially go down into the gum-line. A better option is to use the curved drop wire, which meets the mid-crown surface of the adjacent

Occlusal Rest Wire



USING THE OCCLUSAL REST: An occlusal rest wire can be used for added strength of the appliance. The occlusal rest is seated in a groove cut into the distal marginal ridge of the tooth adjacent to the space. For added stability, a small amount of cement may be placed over the occlusal rest after seating.

Distal Shoe Wire



USING THE DISTAL SHOE: The distal shoe provides support when the opposing tooth has yet to erupt. If used after extraction, the distal shoe is placed down the distal wall of the extracted socket. If used on a healed edentulous space an incision is made with a sterile scalpel. The position of the incision should be determined by examining x-rays of the area. Prior to cementation, x-ray the appliance in the mouth to insure proper fit.

To see an in-depth Chairsides Space Maintainer application demonstration video, visit:
www.denodontal.com/resources